



Maryland
Department of
the Environment

General Permit for Discharges from Swimming Pools and Spas

**General Discharge Permit Number 17-SI
NPDES Number MDG760000**

**Presented By:
Jonathan Rice
Thursday, April 20, 2023**



Agenda

- Permit Introduction
- Changes from 12-SI Permit
- Review of Universal Limitations (all discharges)
- Review of Category Specific Limitations
- How to Complete and Submit Forms
- Review of Compliance Issues



We Have a New Permit!

- The SI General Permit regulates discharges from draining/drawdown, cleaning, filter backwash, and other ancillary discharges from swimming pools and similar facilities.
- The 17-SI became effective on **December 1, 2022**, replacing the 12-SI.
- Existing permittees have until **April 1, 2023** to reapply with no lapse in coverage
- Website: <https://mdewwp.page.link/SIGP>



How Can I Find A Current Permit?

- Wastewater Permits Interactive Search Portal
- <https://mdewwp.page.link/WWPPortal>
- Can search by facility name, address, permit number, county, etc.
- Many permits have the ability to download a copy of the existing registration letter and Notice of Intent.



Wastewater Permits Portal

Facility Name: Address: City:
 Zip Code: State Num.: NPDES Number:
 County: Watershed:

1 facility found

	Facility Name	Address	City	Zip Code	County	State Num.	NPDES Num.	Status
More Info.	Fairlands Sports & Aquatic Complex	13820 Old Gunpowder Rd	Laurel	20707	Prince George's	12SI7250	MDG767250	Admin Ext

Results for 12SI7250

View Report	Permit Registration Letter for 12SI7250
-----------------------------	---

More Info.	Facility Name	Address	City	Zip Code	County	State Num.	NPDES Num.	Status
More Info.	Community Pool	Brookside Common	Annapolis	21401	Prince George's	12SI7250	MDG767250	Ext
More Info.	Dulaney Towers Condominiums & Apartments	911 Locustvale Rd	Towson	21204	Baltimore	12SI6511	MDG766511	History
More Info.	Eagle's Nest Country Club	12801 Stone Hill Road	Phoenix	21131	Baltimore	12SI7193	MDG767193	Admin Ext
More Info.	Eagles Passages Hoa	2608 Howard Grove Rd	Davidsonville	21035	Anne Arundel	12SI6685	MDG766685	Admin Ext
More Info.	Eagleswalk	7422 Brushfield Rd	Rosedale	21237	Baltimore	12SI6409	MDG766409	History

Search



Significant Changes from 12-SI

- Groundwater-only dischargers no longer required to submit a Notice of Intent
- New flushing requirement for first 30 seconds of filter backwash
- Reorganization into “Discharge Types”
- Standard Operating Procedures required
- Discharge Monitoring Reports – Due Once Annually every October 28th
- Explicit inclusion of other facility types/ exclusion of bumper boats
- Tier II Notification Requirement
- New conditional limits for dechlorination



Minor Clarifications from 12-SI

- Clarifying language regarding chemical additives
- Specific reference to cleansing of cartridge filters, as part of “Filter Backwash” discharge type
- Clarifying language regarding use of contractors
- Better definition of “public” vs. “private”
- Increased clarity regarding groundwater as the receiving waters
- Narrative temperature monitoring for draining
- Reference to “Permit Exemption Form”



Old Permit Format

B. Erosion

The permittee shall not discharge any gully or ditch onto normally high ground not limited to, but including, rate controls. The flow rate controls shall avoid bottom



MARYLAND DEPARTMENT OF THE ENVIRONMENT
1800 Washington Boulevard • Baltimore Maryland 21230
(410) 537-3000 • 1-800-633-6101 • <http://www.mde.state.md.us>

Martin O'Malley
Governor

Anthony G. Brown
Lieutenant Governor

Robert M. Summers, Ph.D.
Secretary

the discharge. The discharge is included, but are a barrier, and flow measures include consistent depth to

PART I. APPLICABILITY

Pursuant to the provisions of the Federal Clean Water Act, 40 CFR Parts 122, 123, and 124, as the "Department" submitted a notice of intent to discharge wastewater from swimming pools and spas in accordance with the eligibility criteria set forth in the permittees' NOI.

GENERAL PERMIT FOR DISCHARGES FROM SWIMMING POOLS AND SPAS

DISCHARGE PERMIT NO. 12-SI

NPDES PERMIT NO. MDG76

Effective Date: October 1, 2012

Expiration Date: September 30, 2017

of Maryland, and the implementing regulations of Maryland, who have submitted a notice of intent to discharge wastewater from swimming pools and spas in accordance with the eligibility criteria set forth in the permit and consistent

A. Geographic Coverage

This permit covers discharges from swimming pools and spas located within the boundaries of the state of Maryland.

boundaries of the

B. Eligible Discharges

This permit covers discharges from any public or private swimming pool or spa.

wash, and cleaning water

3. Discharge of

4. Percolation of

compound containing less than 0.1 milligram per liter of any toxic substance by any alternative method or an

5. Deck drains discharging pool overflow, cleaning washwater, etc. are subject to the same limits identified in this PART.

PART I. APPLICABILITY AND COVERAGE	3
A. GEOGRAPHIC COVERAGE	3
B. ELIGIBLE DISCHARGES	3
C. INELIGIBLE DISCHARGES	3
D. NO PERMIT REQUIRED	3
E. INDIVIDUAL PERMIT OR ANOTHER GENERAL PERMIT REQUIRED	3
F. TERMINATION OF PERMIT	4
G. AUTHORIZATION	5
H. TRANSFER OF AUTHORIZATION	5
I. CONTINUATION OF AN EXPIRED GENERAL PERMIT	6
J. CHANGE IN LOCATION	6
PART II. DEFINITIONS	6
PART III. CONDITIONS OF REGISTRATION	9
A. REQUESTS FOR REGISTRATION AND FEE REQUIREMENTS	9
B. DEADLINES FOR NOTIFICATION	9
C. REQUIRED SIGNATURES	10
D. FAILURE TO NOTIFY	11
E. CHANGE IN DISCHARGE	11
PART IV. SPECIAL CONDITIONS OF DISCHARGES	11
A. DISCHARGE LIMITS AND MONITORING REQUIREMENTS	11
1. Backwash, Draw Down and Overflow	11
2. Cleaning Wastewater	12
B. EROSION	14
C. OTHER DISINFECTANTS	14
D. ALGAEICIDES	14
E. OTHER REQUIREMENTS	14
PART V. MONITORING AND REPORTING	14
A. REPRESENTATIVE SAMPLING	14
B. SAMPLING AND ANALYTICAL METHODS	15
C. DATA RECORDING REQUIREMENTS	15
D. MONITORING EQUIPMENT MAINTENANCE	15
E. ADDITIONAL MONITORING BY PERMITTEE	15
F. REPORTING MONITORING RESULTS	15

ne-containing less than 0.1 method or an



New Permit Format

Table Discharges to Groundwater:

ations

D
B.
E
W
de
no
DIS
Di
DIS
thi
fr
DIS
we
SP
E
You
cat
else
C.
Ur
re
pr
qu
be
an
pa
gr

Paran
Flow
pH
The limit
Total Re
Chlorine
The limit
Total Re
Bromine
The limit
Cyanuri
The limit
Total Co
The limit
Total Sil
The limit
PHMB
The limit
and discl
Dissolve
Oxygen
The limit
and discl
Dissolve
Oxygen

See Part III.D.2 before you select groundwater as the sole receiving waters.

Groundwater discharges are not subject to numerical limitations or reporting, unless you are using pool additives containing copper or silver.

If you are not using copper or silver additives, you must measure or estimate discharge flow or volume for each event and maintain a log of events on site. This monitoring log must be made available if requested by Department personnel.

Table A-1: Discharge Type A, Discharges to Groundwater – Reporting and Limitations
****This table is applicable if you are using pool additives which contain copper or silver.****

Parameter	Daily Maximum	Quarterly Average	Units	Monitoring Frequency	Sample Type	Notes
Flow	REPORT	REPORT	gpd	1/Discharge	Measured	(1) (2)
The limit below is applicable only if you use a pool additive containing copper:						
Total Copper	1.0		mg/L	1/Discharge	Grab	(2)
The limit below is applicable only if you use a pool additive containing silver:						
Total Silver	0.1		mg/L	1/Discharge	Grab	(2)

Notes

(1) (2)

(2)

(2) (3)
(4)

(2) (5)

(2) (6)

(2) (3)

(2) (3)

(2) (7)

I.D.5.c)

(2) (8)

I.D.5.c)

(2) (9)

2
5
8
11

MARYLAND GENERAL DISCHARGE PERMIT NO. 17SI (NPDES NO. MDG76) – APPENDIX A Page A-2
unless otherwise stated, you are only permitted to discharge under this permit after notifying and getting approval from M

- Notes – Table A-1**
- (1) You may estimate flow pursuant to Part IV.A.2 of the permit.
 - (2) The daily maximum value is highest value obtained for the given parameter for all discharge events during the reporting quarter. If there was more than one draining event in a given quarter, you must attach a record of flow and required monitoring results for each event to your form in NetDMR.



Who needs an SIGP? (Part I)

- Eligible Types of Facilities
 - Pools, spas, baptismal fonts, and similar facilities including water slides, lazy rivers, spray pads, splash pads, interactive fountains, and water-themed amusement rides
- Eligible Discharges (new categorization)
 - Discharge Type A: Draining/Drawdown
 - Discharge Type B: Cleaning Wastewater
 - Discharge Type C: Wastewater from Filter Backwash
 - Discharge Type D: Wastewater from Overflow, Splashout, Spraydown
- Limitations of Coverage
 - No facilities which may discharge pollutants not addressed in the permit.
- Dischargers to sanitary sewer are exempt (Appendix C)



Sanitary Sewer Exemption Form

MARYLAND DEPARTMENT OF THE ENVIRONMENT

SECTION I: Facility Information

Pool Name

SECTION III: Certification

To be completed by a responsible corporate officer, proprietor, general partner, principal executive officer or ranking elected official, as detailed in the permit.

"I certify under penalty of law that this document and all attachments were prepared under my direction or supervision in accordance with a system designed to assure that qualified personnel properly gather and evaluate the information submitted. Based on my inquiry of the person or persons who manage the system, or those persons directly responsible for gathering the information, the information submitted is, to the best of my knowledge and belief, true, accurate, and complete. I am aware that there are significant penalties for providing false information, including the possibility of fine and imprisonment for knowing violations."

Facility Representative Signature

Date

Facility Representative Name/Title: Typed or Printed

NOTE TO INSPECTORS: MDE has not reviewed the information presented on this form. If discharges at this facility are determined to flow into surface waters (including storm drains) or groundwater, please notify MDE-WSA Compliance immediately at (410) 537-3510.

Discharge Types:

Total Capacity of Pool / Spa:

gallons

A) Draining/drawdown:

sanitary sewer do not drain/drawdown other

B) Cleaning Wastewater:

sanitary sewer do not drain/drawdown other

C) Filter Backwash:

sanitary sewer do not drain/drawdown other

NOTE: Do not confuse sanitary sewer with storm sewer. Discharges to sanitary sewer are subject to permission of the utility to which the sanitary sewer is connected.



Permit? Yes. Notice of Intent? No. (Part III.A)

- Private Pools (<https://mdewwp.page.link/poolownerguidance>)
- Discharge Type D solely
 - If A, B, and C go to sanitary or aren't generated
- Groundwater Discharges
 - All Discharges to Groundwater and no Cu/Ag additives
→ No NOI required
 - Groundwater NOI Exemption form in Appendix D (not required by MDE, but encouraged)
 - Part Surface/Part GW Discharges → NOI required
- All of the above discharges must still follow terms of the permit



NEW Groundwater-Only Form

SECTION I: Facility Information

Pool Name

SECTION III: Certification

To be completed by a responsible corporate officer, proprietor, general partner, principal executive officer or ranking elected official, as detailed in the permit. *"I certify under penalty of law that this document and all attachments were prepared under my direction or supervision in accordance with a system designed to assure that qualified personnel properly gather and evaluate the information submitted. Based on my inquiry of the person or persons who manage the system, or those persons directly responsible for gathering the information, the information submitted is, to the best of my knowledge and belief, true, accurate, and complete. I am aware that there are significant penalties for providing false information, including the possibility of fine and imprisonment for knowing violations."*

Facility Representative Signature

Date

Facility Representative Name/Title: Typed or Printed

NOTE TO INSPECTORS: MDE has not reviewed the information presented on this form. If discharges at this facility are determined to flow into surface waters (including storm drains) or pool additives contain copper or silver, please notify MDE-WSA Compliance immediately at (410) 537-3510.

SECTION II: Pool/Discharge Information

Discharge Types

Total Capacity of Pool / Spa:

gallons

A) Draining/drawdown: groundwater only do not discharge/discharge to sanitary sewer

B) Cleaning Wastewater: groundwater only do not discharge/discharge to sanitary sewer

C) Filter Backwash: groundwater only do not discharge/discharge to sanitary sewer

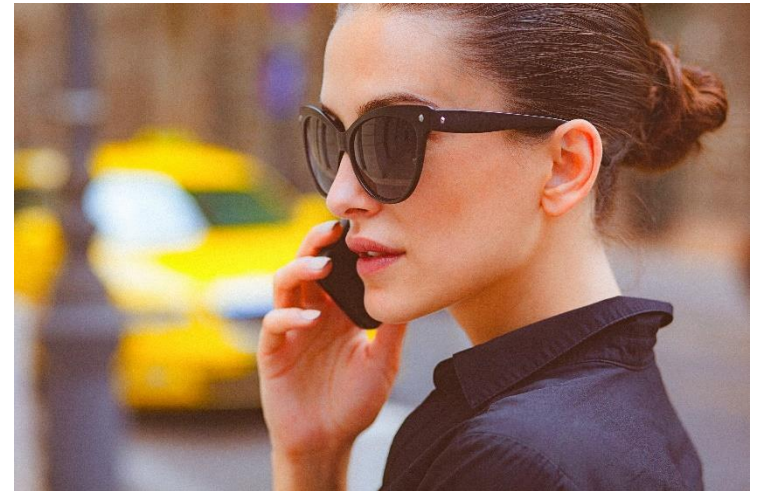
Check here to indicate that you DO NOT use any pool additives containing copper or silver

NOTE TO INSPECTORS: MDE has not reviewed the information presented on this form. If discharges at this facility are determined to flow into surface waters (including storm drains) or pool additives contain copper or silver, please notify MDE-WSA Compliance immediately at (410) 537-3510.



Notification Requirements (Part III.B)

- Over 100,000 gallons in a 24-hour period
- Discharge of unregulated pollutants
- Permit specifies notification to WSA Compliance at 410-537-3510
- May also notify regional WSA Compliance number (contact info later in presentation)





Universal Permit Limitations (Part III.D)

- Erosion and Sediment Control
 - Continued from 12-SI Permit
 - Any gullying over six inches is considered excessive erosion
 - Requires preventative measures
 - Discharges onto dry land should consider diffusers, riprap, splash barriers, and flow rate control.
 - Discharges into flowing or standing water should consider flow rate control and outfall location at sufficient depth to prevent bottom scour





Universal Permit Limitations (Part III.D)

- Discharges to Groundwater (new clarifications)
 - Selecting “groundwater” means ZERO runoff to any water body or storm drain
 - Sole responsibility of permittee to know where discharge is occurring
 - Recommends walking the discharge path to ensure compliance
 - Cannot discharge onto neighboring property without permission
 - Discharges should not occur within 50 feet of a well
 - Septic discharge is a groundwater discharge, but **not recommended** without consulting a septic professional



Universal Permit Limitations (Part III.D)

- Standard Operating Procedures
 - New requirement from 12-SI
 - No specific format required
 - Must contain:
 - pool size
 - map with pool and discharge path
 - procedures for discharge and permit compliance
 - Recommended to maintain required monitoring logs and training information with SOPs
 - SOPs must be maintained on site and made available if requested





Universal Permit Limitations (Part III.D)

- Training and/or Use of Contractors
 - No new requirements – only clarification
 - Specifies that the permit holder is responsible for compliance
- Visual Monitoring
 - Visual inspection required a minimum of once daily when discharge is occurring.
 - Must maintain a log of visual monitoring events to surface waters (including storm sewers)
 - Oil sheen, floating solids, visible plumes of sediment or color, or persistent foam must be reported.



Universal Permit Limitations (Part III.D)

- Chemical Additives

- Disinfection or pH adjustment

- Permit limits are sufficient for chlorine, bromine, PHMB, copper, silver, and acid/base additives
 - Copper/Silver prohibited for splash pads/frequent overflow
 - Any other proposed additive must be approved

- Algaecides

- Must submit a label with the NOI
 - Must notify MDE if changing algaecides
 - If containing chlorine/copper/silver, must note on NOI

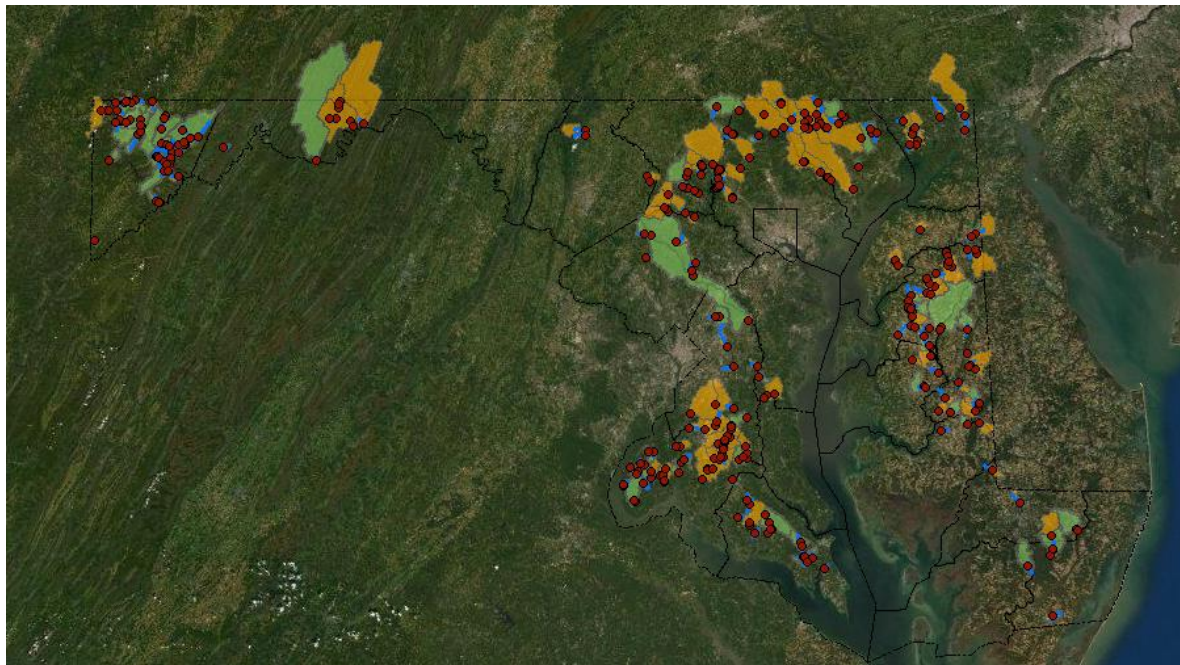
- Dechlorination

- Chemical dechlorination is subject to effluent limits for D.O.
 - Applies to addition of liquid/powder bisulfite or thiosulfate
 - Dechlor tabs are NOT considered chemical dechlorination



Universal Permit Limitations (Part III.E)

- Tier II - Antidegradation
 - Applicants must indicate if they discharge into a Tier II catchment
 - Department may implement case-by-case requirements for discharges to Tier II waters
 - Map at <https://mdewwp.page.link/Tier2Map>





Monitoring and Reporting (Part IV)

- If subject to numerical limits, must collect samples, test, and report results
- Samples must be representative
- Test methods must be in 40 CFR §136.3
- Must maintain records showing date/time/people for each sampling and monitoring event
- Must maintain and properly calibrate any sampling equipment



Monitoring and Reporting (Part IV)

- **MUST Submit Results via NetDMR**
 - Separate forms for each calendar quarter
 - All quarterly forms are due each year on October 28th (Q1, Q2, Q3 for current year, Q4 for previous year)
 - Monitoring results to be attached to NetDMR
 - <https://mdewwp.page.link/MDNetDMR>
- **Non-compliance**
 - Any non-compliance shall be reported to WSA Compliance within 24 hours
 - Follow up report due 5 days after non-compliance event



WSA Compliance Contacts

- Central Region (Baltimore Office): 410-537-3510
 - Counties: Anne Arundel, Baltimore, Baltimore City, Calvert, Charles, Harford, St. Mary's
- Eastern Region (Cambridge Office): 410-901-4020
 - Counties: Cecil, Caroline, Dorchester, Kent, Queen Anne's, Talbot, Somerset, Wicomico, Worcester
- Western Region (Hagerstown Office): 301-665-2850
 - Counties: Carroll, Howard, Montgomery, Prince George's
- Western Region (Frostburg Office): 301-689-1480
 - Counties: Allegany, Frederick, Garrett, Washington



Numerical Limitations

Appendix A





Four Types of Discharge (Appendix A)

- Discharge Type A: Wastewater from Draining or Drawdown
- Discharge Type B: Cleaning Wastewater
- Discharge Type C: Wastewater from Filter Backwash
- Discharge Type D: Wastewater from Pool Overflow, Splashout, and Spraydown of Surrounding Areas



Discharge Type A: Draining/Drawdown

- End-of-season, pre-season, water level management, purge from collection/recycling system
- Numerical limits
 - All surface water discharges limited for pH
 - Other numerical limits are based on additives used
 - Groundwater: Copper/Silver only
 - Surface water: Chlorine, bromine, cyanuric acid, copper, silver, PHMB, dissolved oxygen (for dechlorination)
- Narrative limits
 - No solids which cannot pass a Tyler 20-mesh screen
 - Must manage discharge to prevent in-stream exceedance of temperature standards



Discharge Type B: Cleaning Wastewater

- Extensive pool cleaning efforts anticipated to occur no more than once annually
 - Daily cleaning can commingle with Discharge Type C or D
- Numerical limits (Same at Type A)
 - All surface water discharges limited for pH
 - Other numerical limits are based on additives used
 - Groundwater: Copper/Silver only
 - Surface water: Chlorine, bromine, cyanuric acid, copper, silver, PHMB, dissolved oxygen (for dechlorination)
- Narrative limits
 - No solids which cannot pass a Tyler 20-mesh screen



Discharge Type C: Filter Backwash

- Wastewater from backwashing filters, including cleansing of cartridge filters
- Numerical limits – same as Type A and B
- Narrative limits
 - No solids which cannot pass a Tyler 20-mesh screen
 - Sand and diatomaceous earth filters
 - First 30 seconds of discharge must be directed to sanitary sewer, collected for settling, or allowed to percolate into the ground.
 - After the first 30 seconds, recommended to discharge to groundwater where possible.
 - Cartridge filters
 - Collect water for settling or direct flow to groundwater
 - Cleaning products prohibited without approval



Discharge Type D: Overflow, etc.

- Discharges resulting from:
 - Overflow or splashout during swimming activities
 - Spraying down decks/surrounding areas
 - Overflow during normal operations of splash pads (not purging recycling systems)
- No Notice of Intent required solely for Type D
- No numerical limits; only BMPs
 - Overflow: Minimize/prevent reaching surface waters
 - Spraydown
 - No detergents or additives if discharging to surface or ground
 - Clean debris/spills prior to spraydown
 - No visible oil sheen



Appendix B: Definitions/Acronyms

- Appendix B contains applicable definitions, abbreviations, and acronyms and intended to apply for the permit.
- **Private**: Defined for the purposes of this permit as
 - Not open to the public;
 - Located on a property shared by no more than four residences; and
 - Used exclusively by residents and non-paying individuals invited by an owner to use the pool.



Notice of Intent

SECTION



Submit
authorize
pools and
All inform
provided

Latitude:

Discharge Type A: Wastewater from Draining of Drawdown				<input type="checkbox"/>	
Receiving Waters:	<input type="checkbox"/> Groundwater (see Note 2 above)	<input type="checkbox"/> Surface Water	<input type="checkbox"/> Sanitary Sewer		
Size of Pool (in gallons):		Frequency of Discharge:			
Pool Additives:	<input type="checkbox"/> Chlorine	<input type="checkbox"/> Cyanuric Acid	<input type="checkbox"/> Silver	<input type="checkbox"/> PHMB	
	<input type="checkbox"/> Bromine	<input type="checkbox"/> Copper	<input type="checkbox"/> Other (Attach a list to this NOI)		
Do you chemically dechlorinate the discharges (using anything other than dechlor tablets)? See Part III.D.5.c of the permit for details.				<input type="checkbox"/> Yes	
Discharge Type B: Cleaning Wastewater				<input type="checkbox"/>	
Receiving Waters:	<input type="checkbox"/> Groundwater (see Note 2 above)	<input type="checkbox"/> Surface Water	<input type="checkbox"/> Sanitary Sewer		
Average Discharge (in gallons per day):		Frequency of Discharge:			
Pool Additives:	<input type="checkbox"/> Chlorine	<input type="checkbox"/> Cyanuric Acid	<input type="checkbox"/> Silver	<input type="checkbox"/> PHMB	
	<input type="checkbox"/> Bromine	<input type="checkbox"/> Copper	<input type="checkbox"/> Other (Attach a list to this NOI)		
Do you chemically dechlorinate the discharges (using anything other than dechlor tablets)? See Part III.D.5.c of the permit for details.				<input type="checkbox"/> Yes	
Discharge Type C: Wastewater from Filter Backwash				<input type="checkbox"/>	
Receiving Waters:	<input type="checkbox"/> Groundwater (see Note 2 above)	<input type="checkbox"/> Surface Water	<input type="checkbox"/> Sanitary Sewer		
Average Discharge (in gallons per day):		Frequency of Discharge:			
Pool Additives:	<input type="checkbox"/> Chlorine	<input type="checkbox"/> Cyanuric Acid	<input type="checkbox"/> Silver	<input type="checkbox"/> PHMB	
	<input type="checkbox"/> Bromine	<input type="checkbox"/> Copper	<input type="checkbox"/> Other (Attach a list to this NOI)		
Do you chemically dechlorinate the discharges (using anything other than dechlor tablets)? See Part III.D.5.c of the permit for details.				<input type="checkbox"/> Yes	
Discharge Type D: Wastewater from Pool Overflow/Splashout/Etc.					
<p>**** Coverage under Discharge Type D is only required if you also discharge Type A, B, or C. **** You are automatically registered under Type D if you are registered under Type A, B, or C. See Part I.B and the section for Discharge Type D in Appendix A of the 17-SI Permit for details. Discharge Type D has no numerical limits - See Appendix A of the 17-SI Permit for Narrative Requirements.</p>					



ends to be
swimming
of this form.
ctions are



Main Compliance Concerns/Takeaways

- **REPORTING!!!**

- All registrants **MUST REPORT** via NetDMR
- New requirements for WSA Compliance for facilities in Significant Non-compliance (SNC)
- A significant number of pools are in SNC for failing to submit DMRs

- **Must submit a new NOI!**

- All pools with existing coverage must submit a new NOI by April 1, 2023.
- Coverage under the 12-SI will NOT continue into the new pool season if no NOI is submitted by then.



Main Compliance Concerns

- Groundwater-only discharge?
 - Be logical!
 - Know your drainage path! You should be able to show an inspector.
 - Don't cause a nuisance for your neighbor!
 - Sand and Diatomaceous Earth Filter Backwash
 - Be prepared with a plan for the 1st 30 seconds
 - SOPs and Monitoring Logs
 - You must have SOPs and Monitoring Logs (as outlined earlier)
 - Log visual monitoring AND compliance sampling events
-



Upcoming Training Events

- Future Public Training Events (via Google Meet)
 - Thursday, April 20, 2023 – 1 to 3 PM
 - Links to sign up provided at <https://mdewwp.page.link/SIGP>

Questions???



Jonathan Rice

Water and Science Administration

Wastewater Pollution Prevention and Reclamation Program

Industrial and General Permits Division

Jonathan.Rice@maryland.gov

(410) 537-3859
